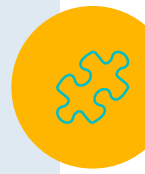
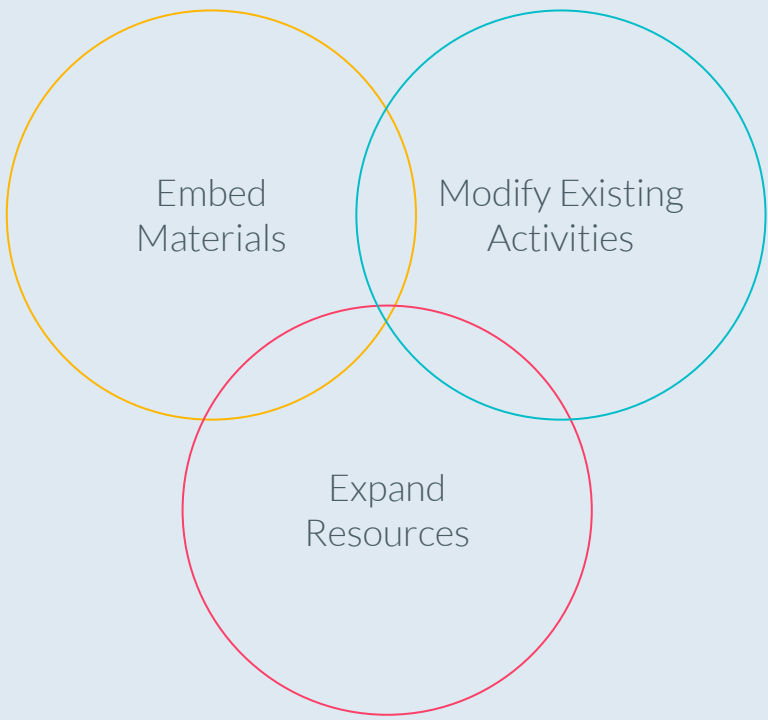




PPCC EPIC  
Strategies &  
Activities

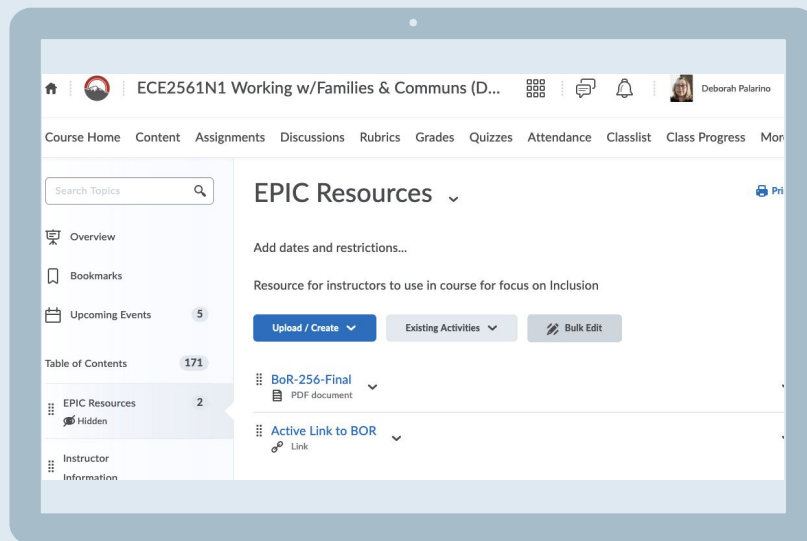


# OUR SYSTEM-WIDE APPROACH



## Securing the Resource in the Course

All BOR were posted into our D2L shell to reduce the risk of loss





EXAMPLES OF  
DIFFERENT  
STRATEGIES  
WITH  
RESOURCES

FEEDBACK OF  
EMBEDDED  
RESOURCES

STEMIE STORYBOOK  
CONVERSATIONS

EXCEPTIONAL CHILD

WORKING WITH  
FAMILIES &  
COMMUNITIES





“During the course, I particularly enjoyed learning about how to accommodate children with special needs.. I have some previous experience working in special education and working with adults with disabilities but that was prior to joining the army, so a couple years ago. I greatly enjoyed working in that field. The connections I was able to make and the lessons I learned have really stuck with me. I really love having to be creative and find a way to modify a classroom or activity to meet an individual’s needs while still achieving a common goal. I enjoyed that our curriculum placed an emphasis on special needs students. There was a lot of information available about this topic, which I did not necessarily expect in an early childhood education course.”

*-Student evaluation ECE 101/103 Boot Camp course SP22*





# Slides Carnival

**Free templates for all your presentation needs**



For PowerPoint and  
Google Slides



100% free for personal  
or commercial use



Ready to use,  
professional and  
customizable



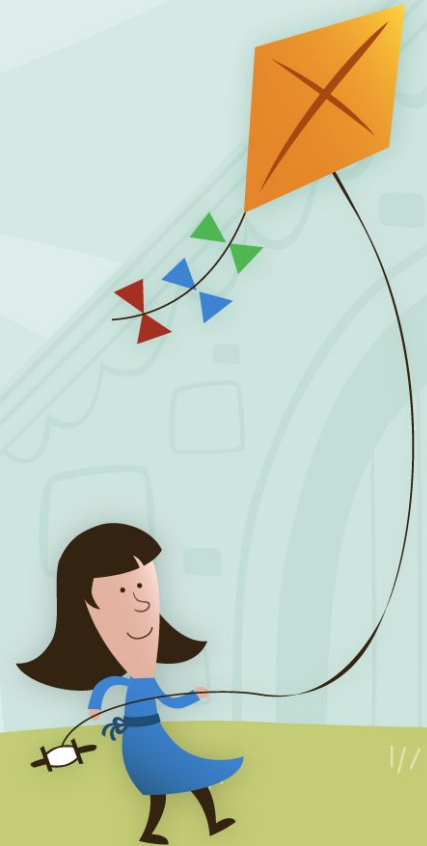
Blow your audience  
away with attractive  
visuals



# Arapahoe Community College

EPIC

May 25, 2022



# STEMIE

[stemie.fpg.unc.edu](http://stemie.fpg.unc.edu)



## Adaptations:

“At STEMIE, adaptations are used to ensure young children with disabilities can fully participate and engage in STEM (science, technology, engineering, and math learning opportunities and experiences.”

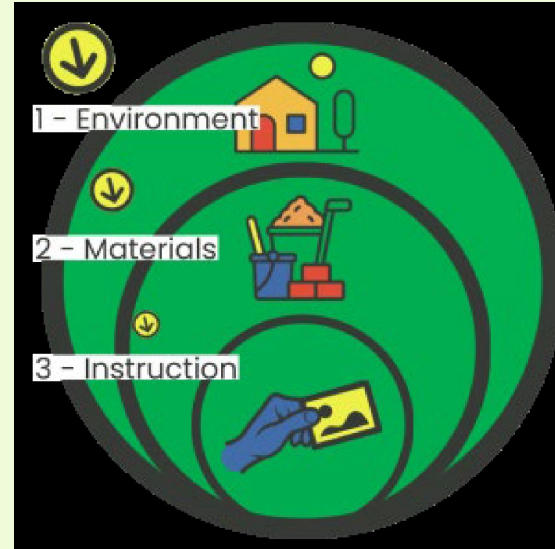
(<https://stemie.fpg.unc.edu/sites/stemie.fpg.unc.edu/files/A%20Guide%20to%20Adaptations%20r-3-7-2022.pdf>)





# Hierarchy of Adaptations

- Environment
- Materials
- Instruction



# Story Book Conversations with Your Young Child

- Page fluffers
- Tactile outlines
- Binding change
- Picture cues
- Page protection
- Text simplification
- Personalization
- Prop bags/boxes



# Personas

- Personas are short snapshots of individual children, which provide information about the configuration of the child's family, offer insights about the child's likes or interests, and share information about the child as a learner.
- <https://scriptnc.fpg.unc.edu/sites/scriptnc.fpg.unc.edu/files/resources/Infant-Toddler%20Personas.pdf>

